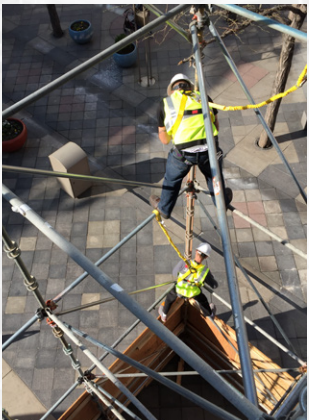




# BOSTON

RETAIL SOLUTIONS





# PROTECTING OUR CUSTOMERS & THEIR BRANDS

At Boston Retail Solutions, we don't just build barricades.

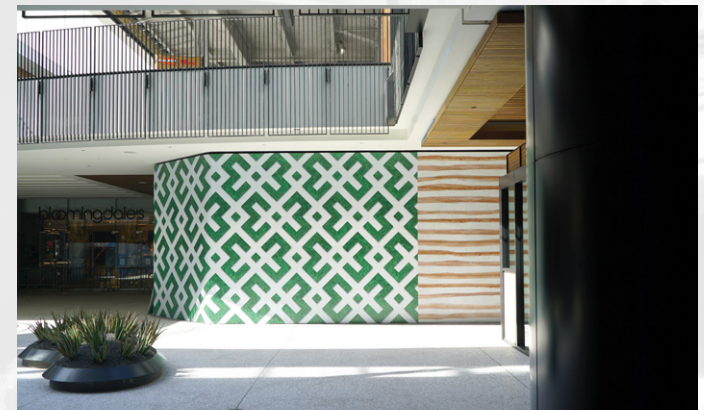
We create custom construction enclosure solutions that provide an unparalleled level of safety while leveraging high-quality graphics to build excitement around future developments. Our dedicated nationwide teams work hand in hand with our clients along the entire process to plan, manage and coordinate every step of the way. From the design and layout of the enclosure and graphics, to the construction and teardown of the barricade, we provide an unmatched level of service to make sure your project is finished on brand and on time.



# ENCLOSURES

Barricades always have been, and always will be, at the core of our business.

The Boston Barricade modular enclosure system has become the industry standard for enclosure solutions, and have been used by hundreds of brands, malls, and developers all over the world. But beyond our physical products, it's our creative approach to problem solving in developing custom solutions that allow us to truly stand above the rest of the industry. We truly look at every project as its own unique problem, and will do whatever it takes to craft the best possible solution for our clients. Whether it's a single retail store, or a major development with multiple store-fronts, we're here to create an enclosure solution that is sure to soar far beyond typical expectations!



# GRAPHICS

## We Print & Ship Daily, Nationwide.

Unlike many of our competitors, our printing business was born as a way to compliment our barricade solutions, but has quickly grown into so much more. Our vast knowledge and understanding of the barricade world, gives us a unique perspective on how to integrate graphics as a part of our enclosure solutions. Pairing the highest quality printing components with that expertise has allowed us to bring a fresh outlook on how our printing products are designed and executed. All of our printing is created to exceed industry standards, and we're proud to continue to offer creative and exciting ways to bring our clients brands, products and messaging to life!



# INSTALLATION

## Install Efficiency by One Team.

For most, setting up a barricade and installing printed graphics requires multiple specialists for different stages to accomplish one specific task. But at Boston Retail Solutions, each of our crews are made up of the specialists required to get the job done all in one. Our teams are trained in multiple disciplines and work together to create one well-oiled machine capable of handling the entire process from start to finish. This approach makes for optimal operational efficiencies, which is what allows us to quickly complete projects for our clients. Don't get stuck dealing with multiple crews or teams over an extended period of time, when we've got what it takes to knock things out in one night!



# ENCLOSURE WORKFLOW

## 1. DRAWINGS



## 2. SURVEY



## 3. PROPOSAL



## 4. BADGES



## 5. BARRICADE

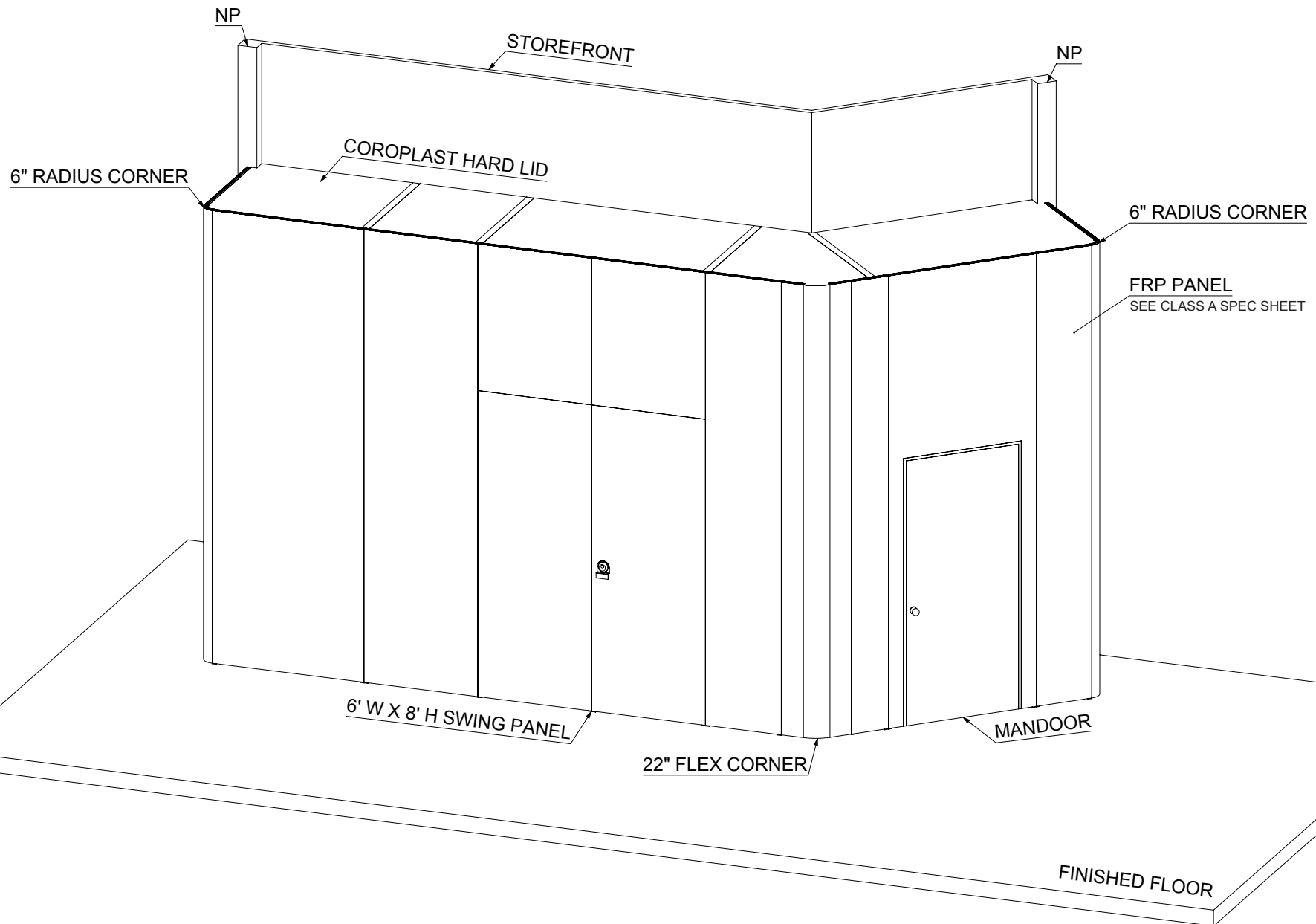


## 6. GRAPHICS



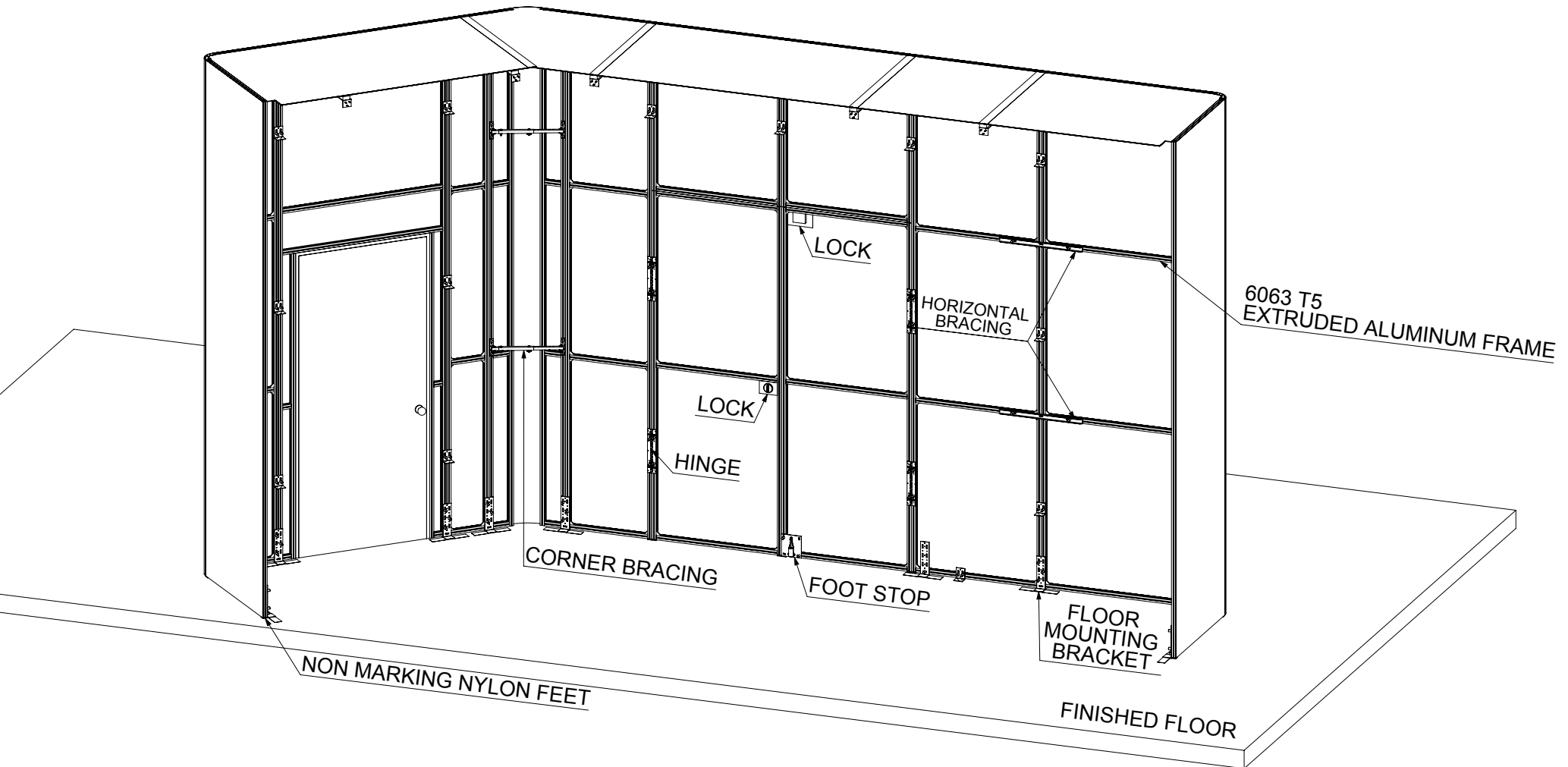
1. Upon review of drawings and specifications, a barricade layout and 3-D mock-up is created along with a preliminary estimate.
2. Typically, the space is site surveyed to verify all field conditions, identify all potential issues and confirm that the 3-d mock-up and layout reflect actual site conditions.
3. At this point a final proposal is created that accounts for all items identified in site survey.
4. Airports require much more planning for the loading in of the panels and other components, and preparation of the space for installing the barricade especially if the space is post-security/air-side. Security badging and/or escort arrangements must be coordinated for the night of install.
5. Panels sections are assembled in place vertically, using special fasteners and connection components that allow us to quickly and efficiently erect the barricade. The base of the barricade is typically attached to the airport flooring utilizing double sided tape with a strong adhesive that prevents the base from being moved. Corners and door assemblies are attached and integrated into the overall system, in their required locations as the wall is built along its intended footprint. Bracing is attached to the bulkhead or underside of ceilings where permissible, and as needed. (This is usually determined during the site survey and walk through). If no attachment to the bulkhead is allowed for a particular location, then A-frames and weighted ballast boxes are added to make the barricade free standing.
6. Graphics and or vinyl cove base is added last, and clean-up is minimal due to the nature of the modular system.

# TYPICAL BARRICADE - OUTSIDE VIEW

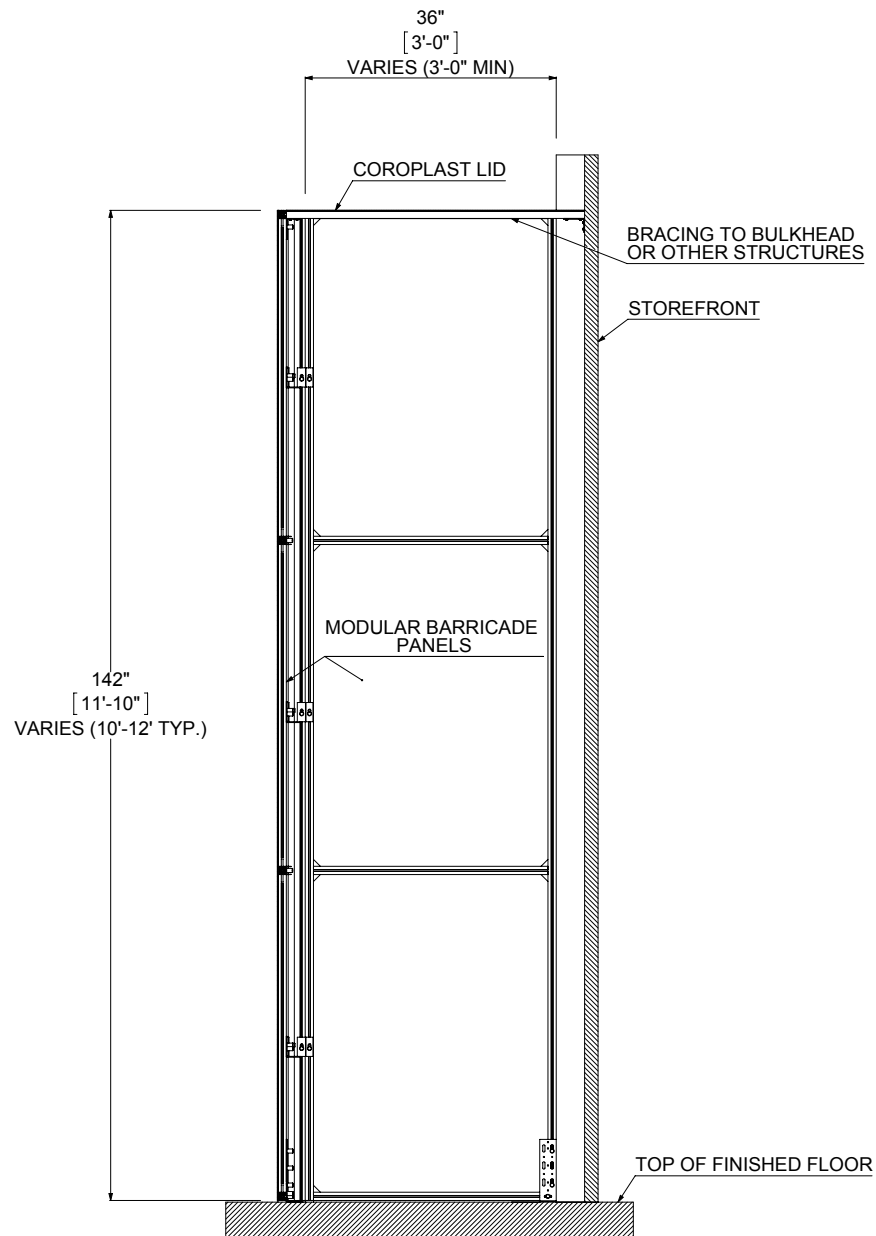




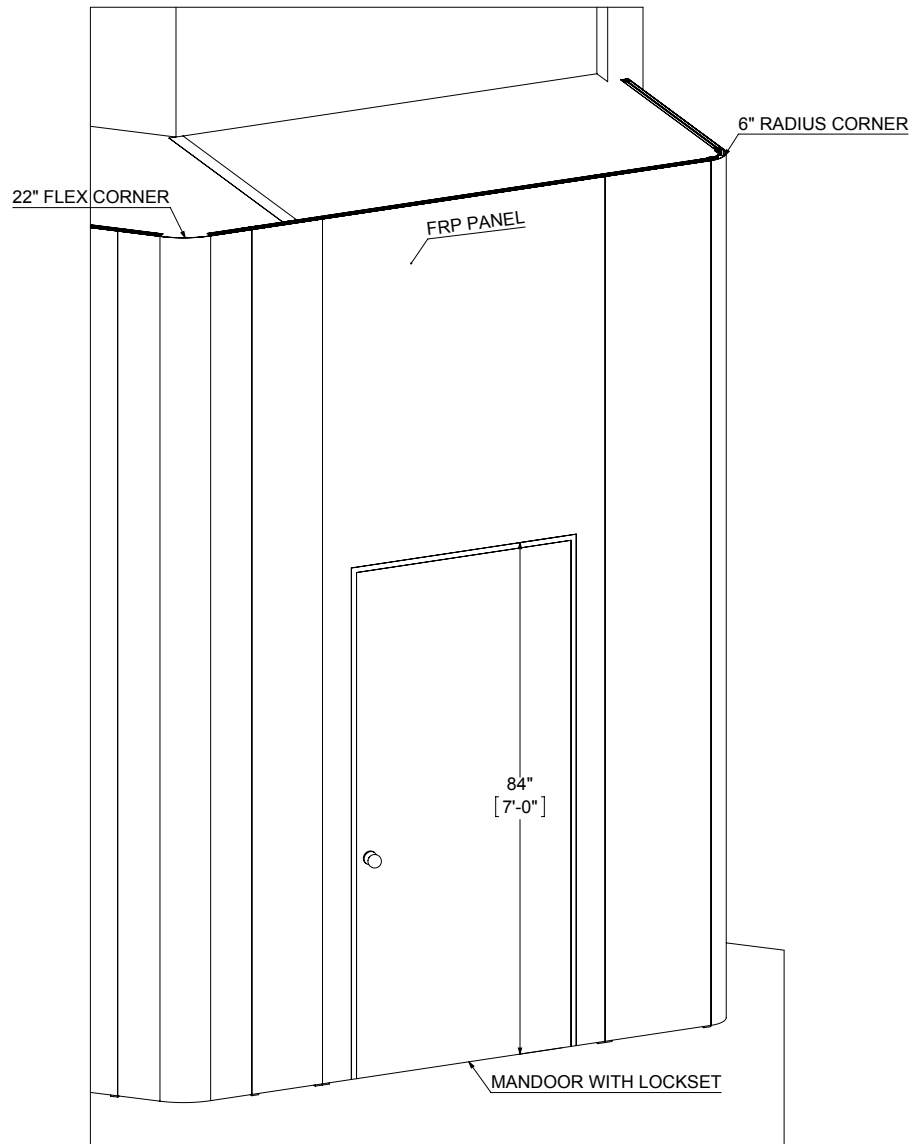
# TYPICAL BARRICADE - INSIDE VIEW



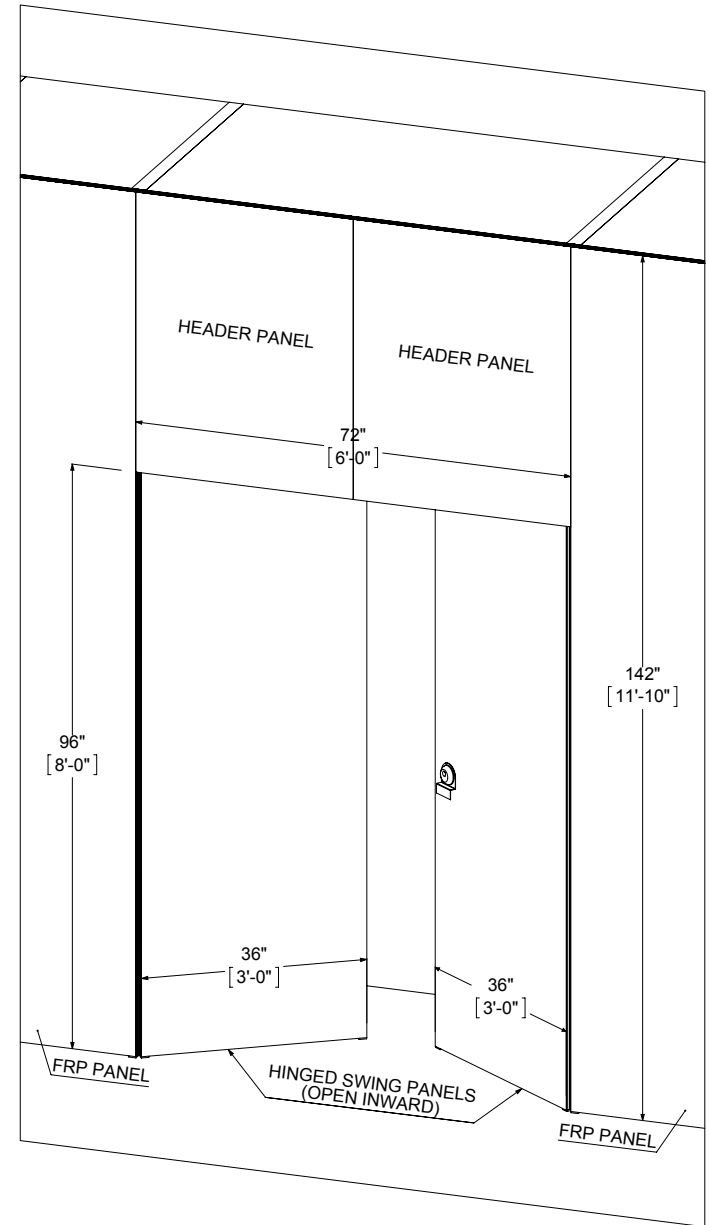
# TYPICAL BARRICADE - WALL SECTION



# TYPICAL BARRICADE - DOOR DETAILS

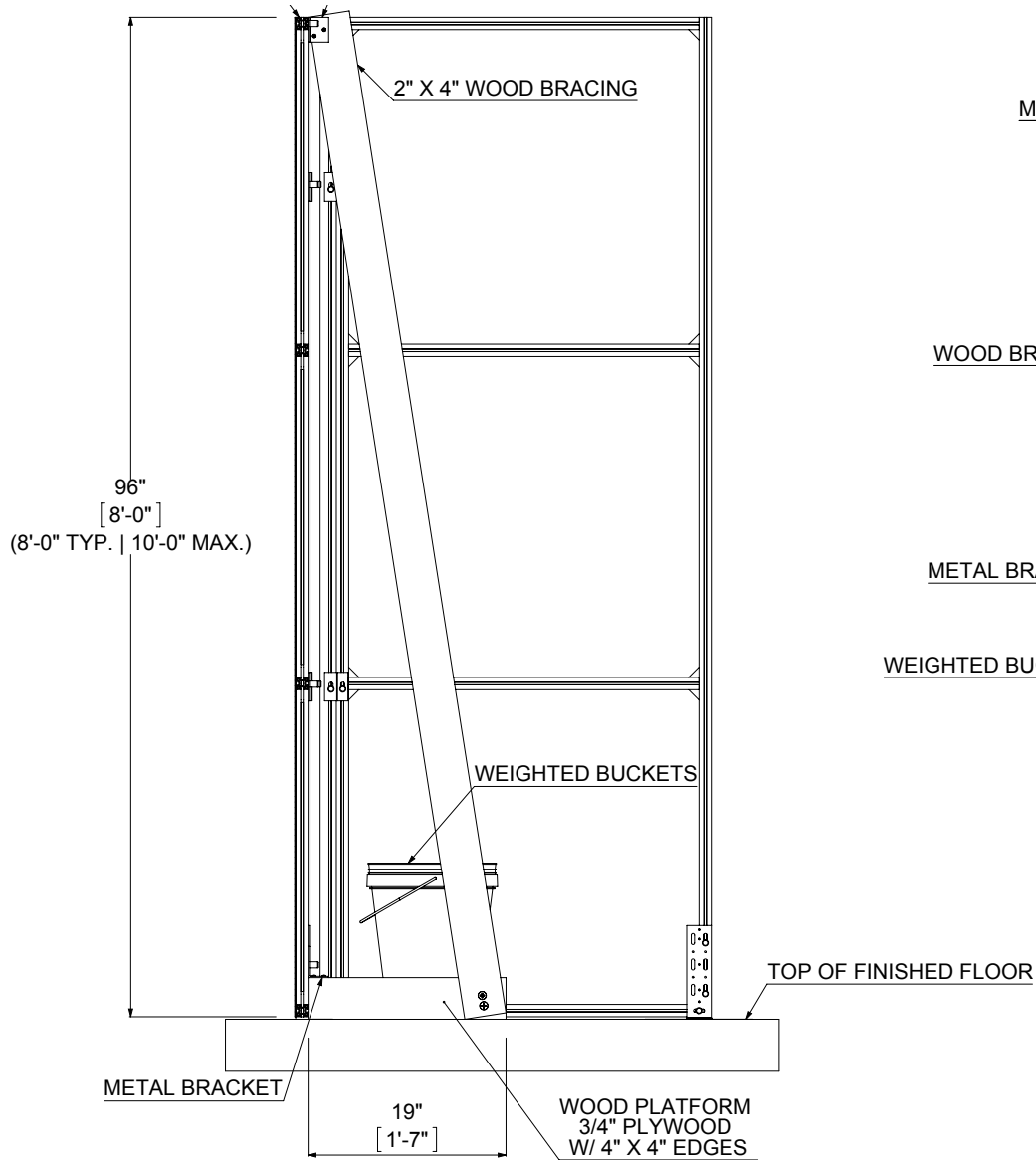


MANDOOR

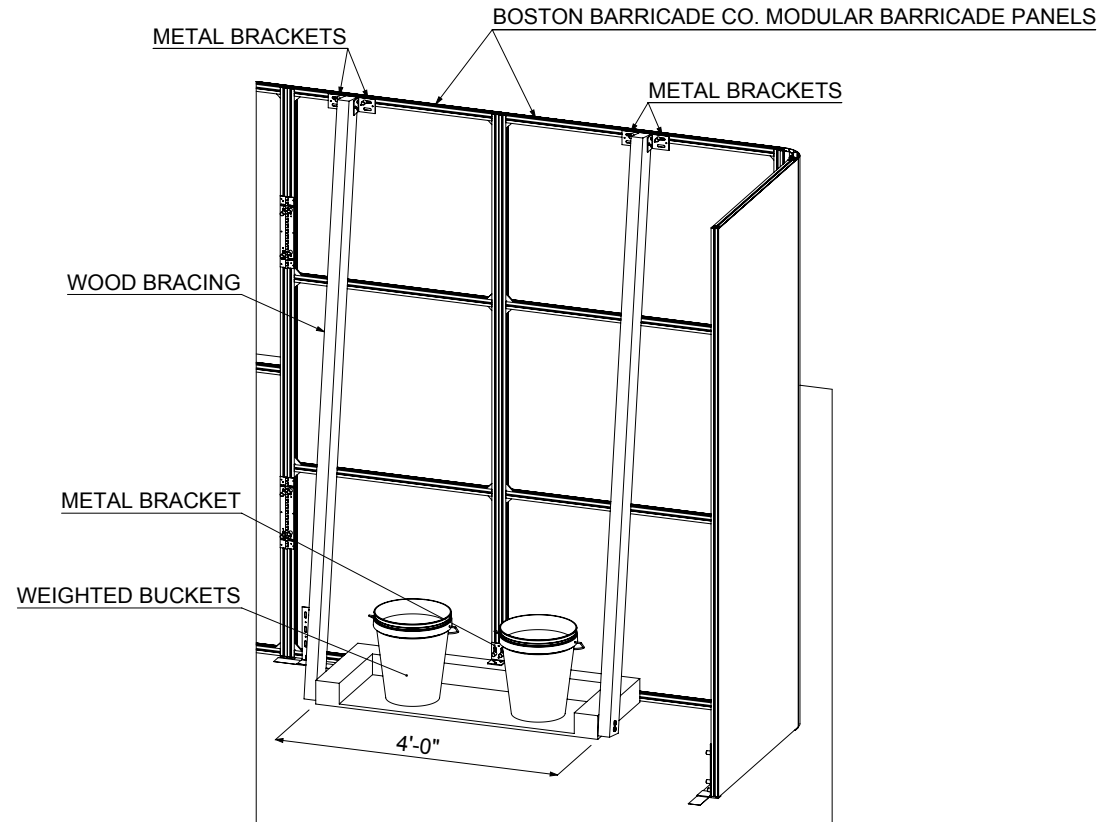


SWING PANEL

# FREESTANDING ENCLOSURES

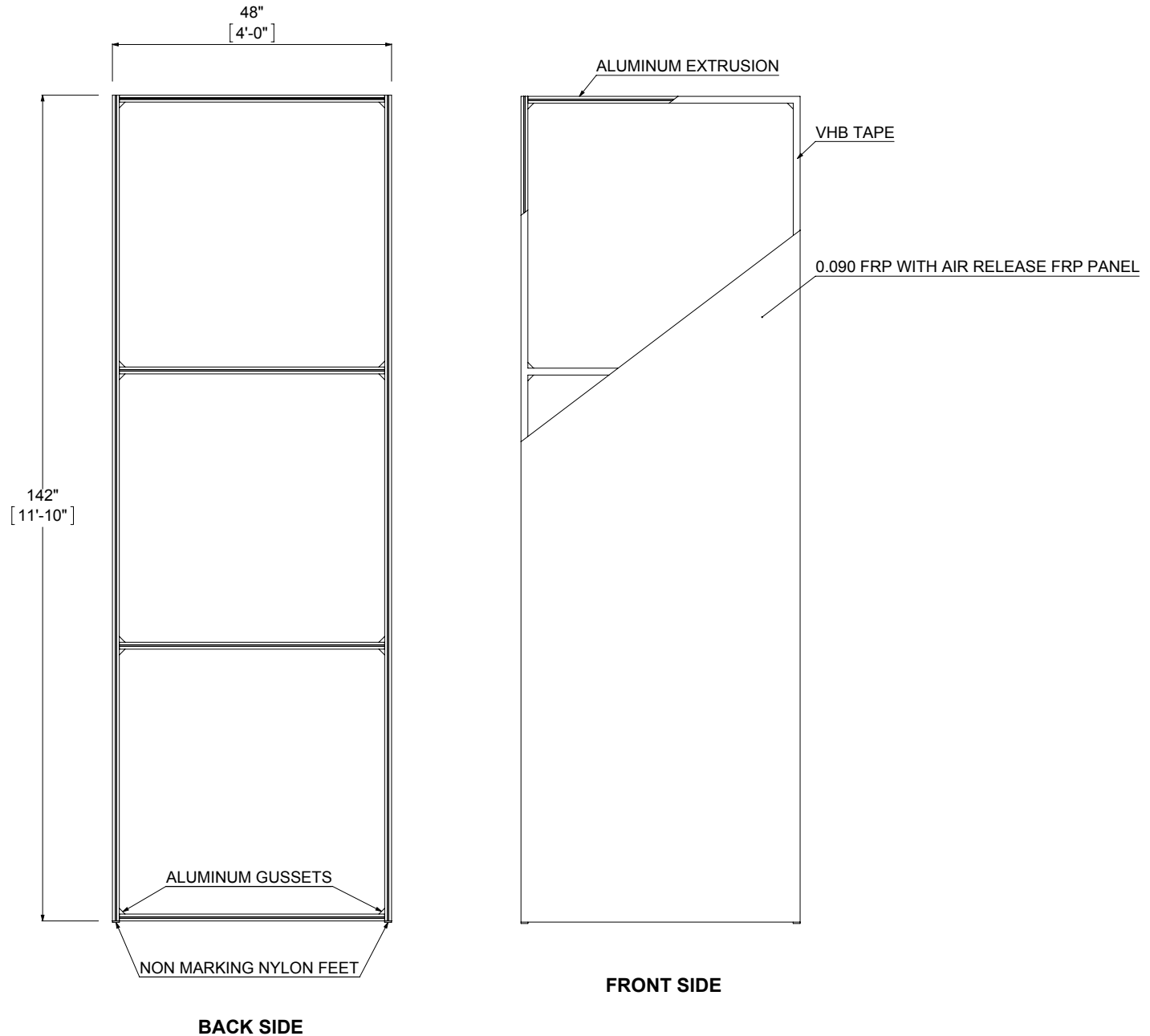


FREE STANDING WALL SECTION



FREE STANDING ISOMETRIC VIEW

# TYPICAL BARRICADE - PANEL DETAILS



# FIRE RATINGS - CLASS A & CLASS C

## CLASS A FIRE RATING PER ASTM E-84 Boston Barricade Class A Fire Rated Barricade Face Skin

PHYSICAL PROPERTIES			
PROPERTY	STA   SSTA   LBALN   LNAM 0.09" (2.3mm)	STA 0.12" (3.0mm)	TEST METHOD
FLEXURAL STRENGTH	14 x 10 <sup>3</sup> psi   97 MPa	11 x 10 <sup>3</sup> psi   76 MPa	ASTM - D790
FLEXURAL MODULUS	0.4 x 10 <sup>6</sup> psi   2758 MPa	0.35 x 10 <sup>6</sup> psi   2413 MPa	ASTM - D790
TENSILE STRENGTH	7 x 10 <sup>3</sup> psi   48 MPa	7 x 10 <sup>3</sup> psi   48 MPa	ASTM - D638
TENSILE MODULUS	0.8 x 10 <sup>6</sup> psi   5516 MPa	0.5 x 10 <sup>6</sup> psi   3447 MPa	ASTM - D638
BARCOL HARDNESS	45	40	ASTM - D2583
IZOD IMPACT	4.0 ft-lb/in notched   0.21 J/mm	6.0 ft-lb/in notched   0.32 J/mm	ASTM - D256
COEFFICIENT OF LINEAR THERMAL EXPANSION	2 x 10 <sup>-5</sup> in/in/°F   36 µm/m/°C	2 x 10 <sup>-5</sup> 10/10/°F   36 µm/m/°C	ASTM - D696
WATER ABSORPTION	0.16%/24hrs@77°F   25°C	0.15%/24hrs@77°F   25°C	ASTM - D570
SURFACE BURNING CHARACTERISTICS	Class A	Class A	ASTM - E84
TABER ABRASION RESISTANCE <small>(cs-17 wheels, 1000g. Wt, 25 cycles)</small>	0.036%Max Wt. Loss	0.036%Max Wt. Loss	Taber Test

### CERTIFICATIONS

1. Meets USDA/FSIS requirements
2. Meets FMVSS 302 Requirements
3. FRP does not support mold or mildew (per ASTM D3273 and ASTM D3274)
4. Meets minimum requirements of major model building codes for Class A interior wall and ceiling finishes of flame spread 25, smoke developed 450 or less (per ASTM E-84)
5. Boston Barricade certifies that Class A Barricade Panel meet the requirements of ASTM D5319.  
 Classification Class A - Flame spread 0 to 25, smoke development index of 450 or less per ASTM E 84.  
 Grade 6: 0.081 to 0.099 n. (2.06 to 2.51mm); 0.090 in. nominal (2.29mm).  
 Tolerances: Width and Length ± 0.125 in (3.175 mm) up to and including 12 ft.  
 Squareness: ± 0.125 in. (3.175 mm)  
 Thickness: ± 10%  
 Chamber: ± 0.125 in. (6.35 mm)
6. This panel has earned GREENGUARD® Indoor Air Quality Certification (Certificate # 16364-410 and 16351-410) greenguard.org.



## CLASS C FIRE RATING PER ASTM E-84 Boston Barricade Class C Fire Rated Barricade Face Skin

PHYSICAL PROPERTIES			
Property	STC   SSTC   LBCLN	FTBB	Test Method
Flexural Strength	14 x 10 <sup>3</sup> psi 97 MPa	14 x 10 <sup>3</sup> psi 97 MPa	ASTM - D790
Flexural Modulus	0.4 x 10 <sup>6</sup> psi 2758 MPa	0.4 x 10 <sup>6</sup> psi 2758 MPa	ASTM - D790
Tensile Strength	7 x 10 <sup>3</sup> psi 48 MPa	7 x 10 <sup>3</sup> psi 48 MPa	ASTM - D638
Tensile Modulus	0.7 x 10 <sup>6</sup> psi 3546 MPa	0.7 x 10 <sup>6</sup> psi 4826 MPa	ASTM - D638
Barcol Hardness	40	40	ASTM - D2583
Izod Impact	4.0 ft-lb/in notched 0.21 J/mm	4.0 ft-lb/in notched 0.21 J/mm	ASTM - D256
Coefficient of Linear Thermal Expansion	0.20 x 10 <sup>-5</sup> in/in/°F 36 µm/m/°C	0.20 x 10 <sup>-5</sup> in/in/°F 36 µm/m/°C	ASTM - D696
Water Absorption	0.16%/24hrs@77°F 25°C	0.16%/24hrs@77°F 25°C	ASTM - D570
Surface Burning Characteristics	Class C	Class C	ASTM - E84
Taber Abrasion Resistance <small>(cs-17 wheels, 1000g. Wt, 25 cycles)</small>	0.015%Max Wt. Loss	0.015%Max Wt. Loss	Taber Test

### CERTIFICATIONS

1. Meets USDA/FSIS requirements
2. Meets FMVSS 302 Requirements
3. FRP does not support mold or mildew (per ASTM D3273 and ASTM D3274)
4. Meets minimum requirements of major model building codes for Class C interior wall and ceiling finishes of flame spread ≤ 200, smoke developed 450 or less (per ASTM E-84)
5. Boston Barricade certifies that Class A Barricade Panel meet the requirements of ASTM D5319.  
 Classification Class C - Flame spread 76 to 200, smoke development index of 450 or less per ASTM E 84.  
 Grade 6: 0.081 to 0.099 n. (2.06 to 2.51mm); 0.090 in. nominal (2.29mm).  
 Tolerances: Width and Length: + .125 in (3.175mm) up to and including 12 ft.  
 Squareness: + .125 in (3.175mm)  
 Thickness: + 10% Camber: + .25 in (6.35mm)

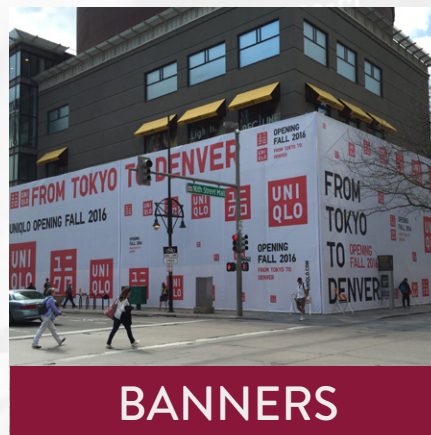
# AIRPORTS THAT COUNT ON US



Plus Over 130 National Retail Brands.  
We're Keeping Good Company.

# SOLUTIONS

More Signage & Graphics Solutions:



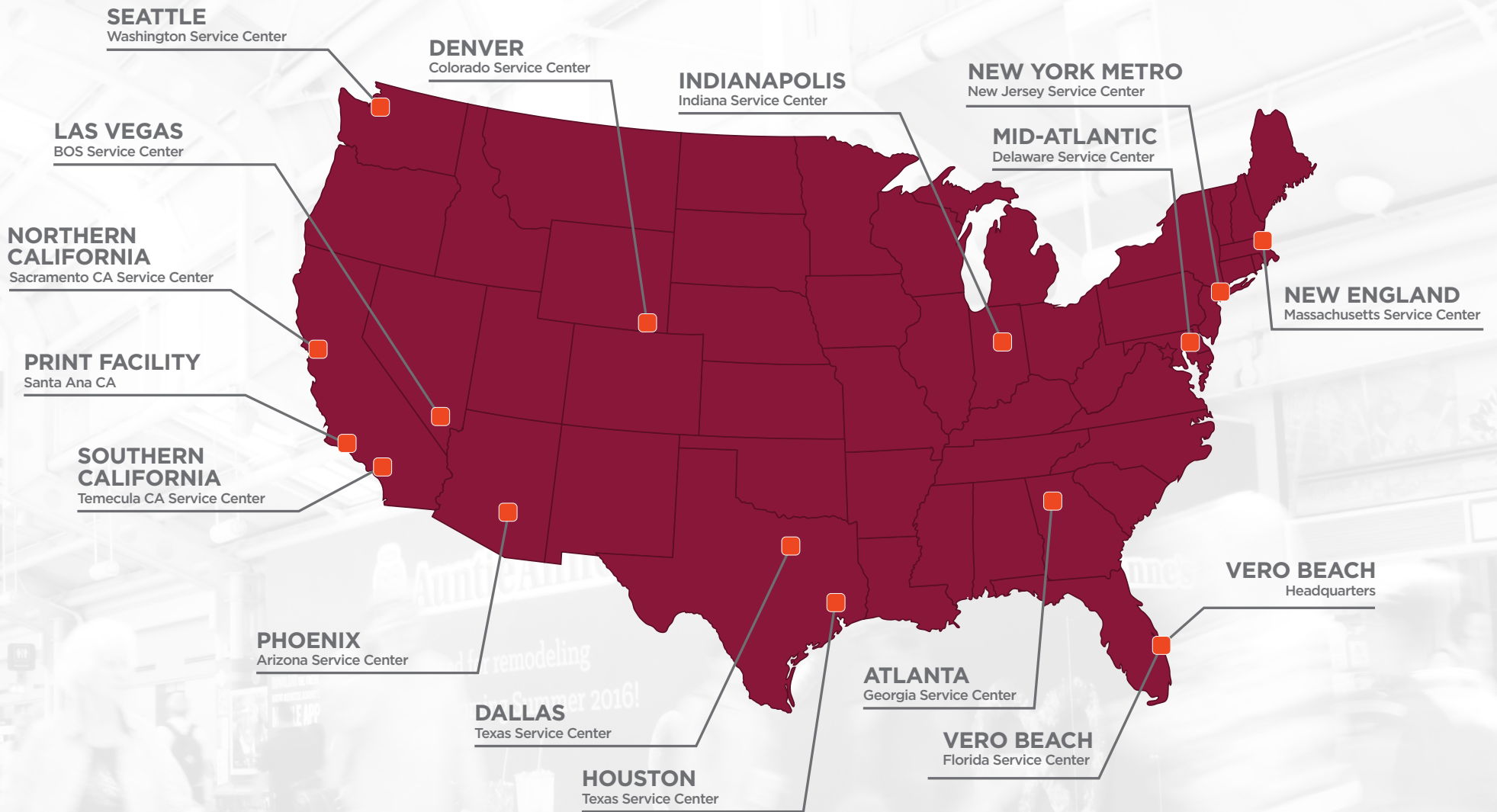


# Call today to get started.

## Let's Build a Custom Solution for You.

Have an upcoming project you need to get started? Talk with one of our dedicated project managers and we'll help put a plan in place for your project right away. We'll work with your timeline to craft a custom solution just for you, and be there every step of the way to make sure it all goes off without a hitch.





Our headquarters are in Vero Beach Florida, and we employ around 150 people in 15 different locations across 12 states.

To deliver quality enclosure & graphic solutions all over the country, you must have a national presence.

From our headquarters in Vero Beach, Florida, and our state of the art printing facility in California, to our dozen Service Centers and sales offices throughout the country, Boston Retail Solutions has built a footprint that can provide service well beyond its namesake city.